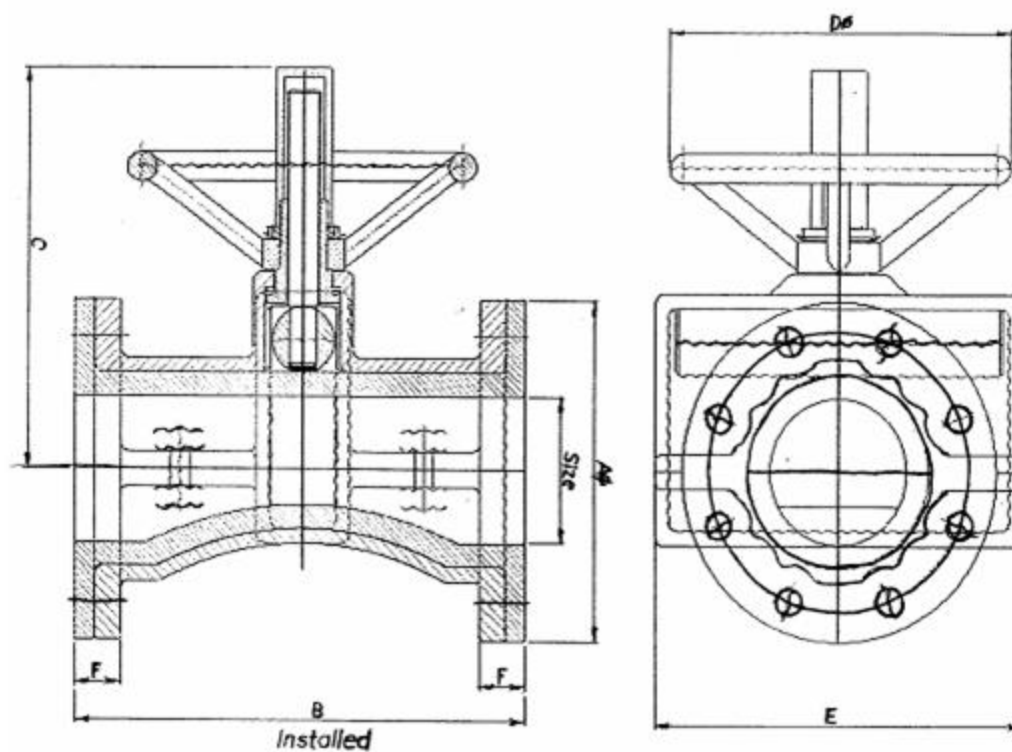




- All sizes in mm.
- Height and Depth measured from the center line.
- Flanges suitable for Table D, Table 10/3 or ANSI 150.
- Face to face dimensions similar to rubber lined diaphragm valves to BS:5156
- Suitable for slurry applications for working pressures up to 10 Bar
- Slightly pre-pinchd which gives a smooth linear flow whilst providing a wide throttling range.
- Safety factor of the sleeve in excess of 3:1.
- Pneumatic actuators easily fitted.
- Position indicator on handwheel valve includes clear dust cover.
- Enclosed body in ductile iron, stainless steel or aluminum eliminates spillage in the event of sleeve failure.

NIPPIT PINCH VALVE pg 2 of 4

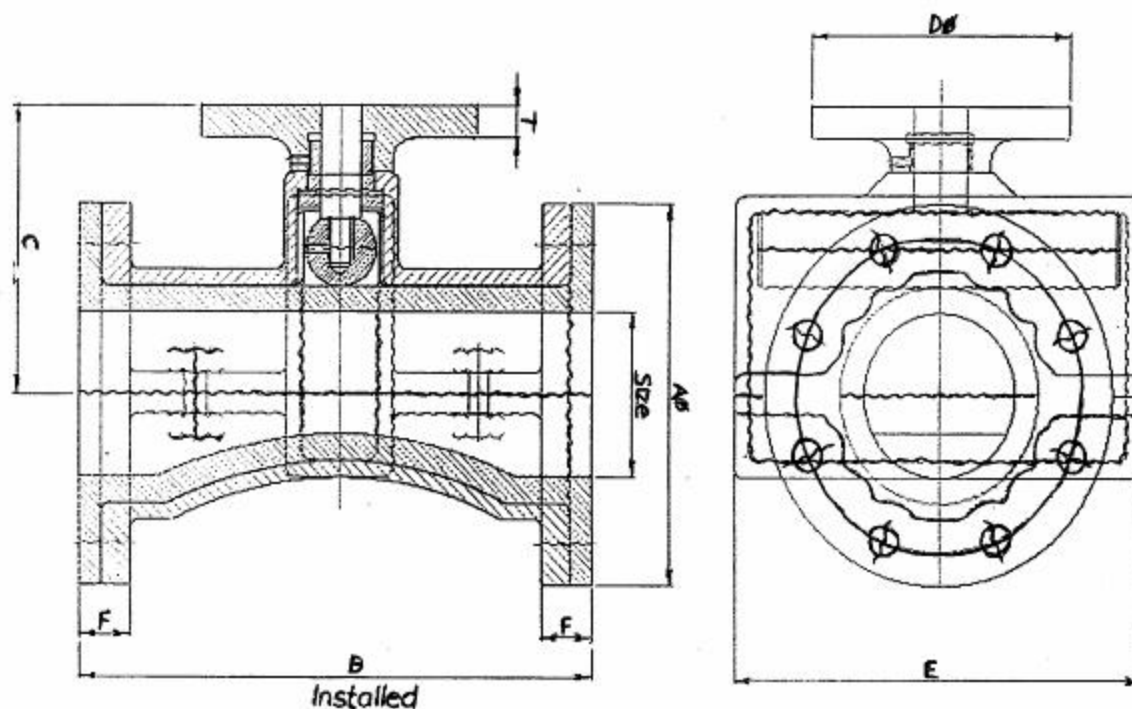
“NIPPIT” handwheel operated



SIZE	A	B	C	D	E	F	MASS kg
50	165	198	174	175	165	26	11
80	200	258	216	200	235	29	22
100	230	313	264	250	270	28	37
150	285	413	359	400	350	38	71
200	345	528	462	600	425	40	120

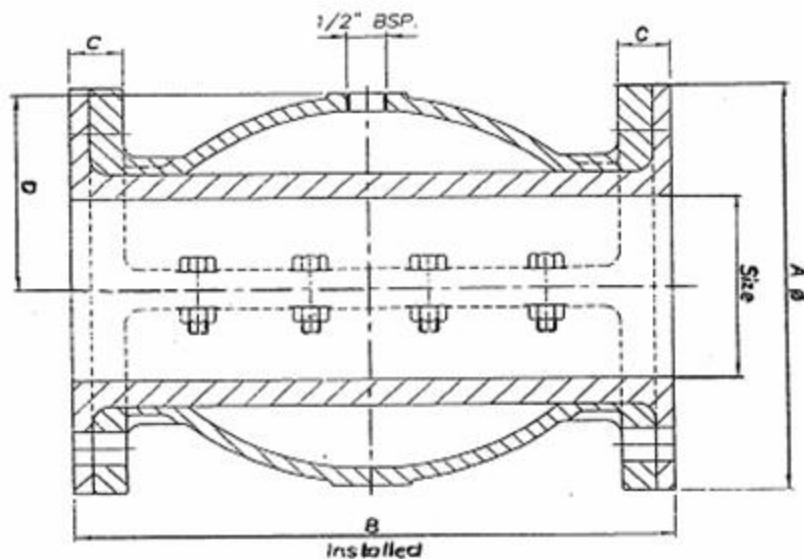
NIPPIT PINCH VALVE pg 3 of 4

"NIPPIT" pneumatic operated



SIZE	A	B	C	D	E	F	T	STROKE	MASS kg
50	165	198	122	130	165	26	15	64	11
80	200	258	154	170	235	29	20	84	22
100	230	313	174	170	270	28	20	110	37
150	285	413	213	200	350	38	20	139	71
200	345	528	253	200	425	40	22	181	120

"NIPPIT" ATC valve



SIZE	A	B	C	D
50	165	198	25	175
80	200	258	27	200
100	230	313	28	250
150	285	413	35	400
200	343	528	41	600